

OVERHEAD HEATER

PRODUCT HIGHLIGHTS

Utilising far-infrared technology, this overhead heater delivers high-efficiency radiant heat with excellent coverage and steady output. Suitable for both indoor and outdoor environments, it provides reliable heating performance with a discreet, space-saving profile.



Targeted Comfort

Delivers heat directly to personnel



Energy Saving

Only heats what's needed, when needed



Sustainability

Zero operational emissions



Wellbeing

Keep staff warm, comfortable & productive



Fast ROI

Pays for itself quicker than you think



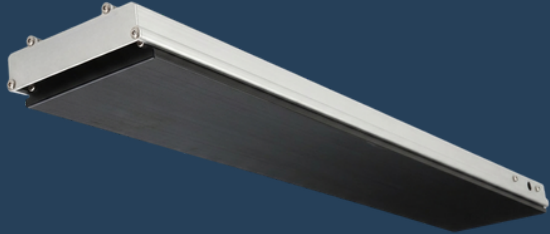
Remote Control Option

Easily manage settings and operation



OVERHEAD HEATER

TECHNICAL SPECIFICATION



Length (mm)	600	1000	1500	2000
Width (mm)	189	189	189	189
Height (mm)	67	67	67	67
Weight (kg)	4.8	5.4	6.5	8.2
Electrical Power (W)	1000	1800	2400	3200
Voltage (V)	220 - 240	220 - 240	220 - 240	220 - 240
Current (A)	4.17 - 4.55	7.5 - 8.18	10 - 11	13.33 - 14.55
IP Rating	IP65	IP65	IP65	IP65

Surface Design	Stainless steel and high resistant aluminium
Connection	UK plug with 2 meters cable
Surface Temperature	< 340°C +/- 5%

APPLICATION

- ✓ Commercial Venues
- ✓ Patios & Outdoor Seating Areas
- ✓ Industrial Space



Tell us about your space, we'll do the rest.