

HEAVY INDUSTRIAL MAT (HI-MAT)

PRODUCT HIGHLIGHTS

Engineered for demanding industrial environments, this far-infrared heating mat delivers efficient, consistent radiant warmth with minimal energy loss. Designed for flexibility, multiple mats can be linked to provide scalable heating across larger operational spaces.



Targeted Comfort

Delivers heat directly to personnel



Energy Saving

Only heats what's needed, when needed



Sustainability

Zero operational emissions



Wellbeing

Keep staff warm, comfortable & productive



Fast ROI

Pays for itself quicker than you think



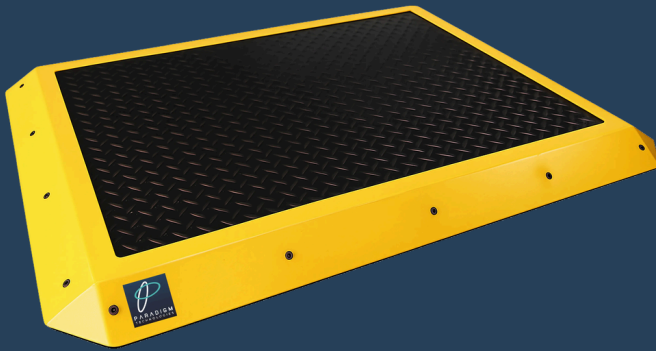
Plug & Play Simplicity

User friendly & adaptable



HEAVY INDUSTRIAL MAT (HI-MAT)

TECHNICAL SPECIFICATION



Dimensions (mm)	930 (L) x 730 (W) x 35 (H)
Weight (kg)	16
Electrical Power (W)	350
Voltage (V)	220 - 240
Current (A)	1.5
IP Rating	IP44

Surface Design	Powder coated heat resistant aluminium
Connection	UK plug with 1.8 meters cable
Surface Temperature	< 60°C +/- 10%

APPLICATION

- ✓ Manufacturing & Assembly Line
- ✓ Office Workstations & Desks
- ✓ Packing Stations & Logistic Hubs



Tell us about your space, we'll do the rest.