

LIGHT INDUSTRIAL MAT (LI-MAT)

PRODUCT HIGHLIGHTS

Designed for light industrial environments, this far-infrared heating mat features a durable aluminium surface for efficient, even heat distribution. Its slim, robust construction ensures reliable performance and long-lasting use in commercial settings.



Targeted Comfort

Delivers heat directly to personnel



Energy Saving

Only heats what's needed, when needed



Sustainability

Zero operational emissions



Wellbeing

Keep staff warm, comfortable & productive



Fast ROI

Pays for itself quicker than you think



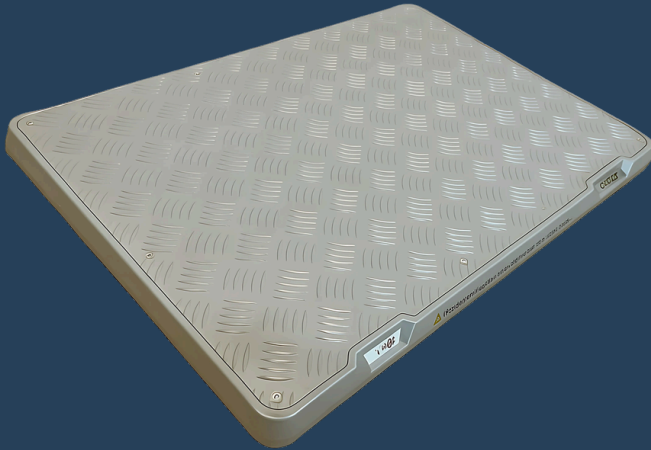
Plug & Play Simplicity

User friendly & adaptable



LIGHT INDUSTRIAL MAT (LI-MAT)

TECHNICAL SEPCIFICATION



Dimensions (mm)	700 (L) x 500 (W) x 40 (H)
Weight (kg)	7.36
Electrical Power (W)	300
Voltage (V)	220 - 240
Current (A)	1.13
IP Rating	IP24

Surface Design

Powder coated heat resistant aluminium

Connection

UK plug with 1.8 meters cable

Surface Temperature

< 60°C +/- 10%

APPLICATION

- ✓ Shop & Trade Counters
- ✓ Booths & Podiums
- ✓ Office Desks



Tell us about your space, we'll do the rest.